



INSULATED STAINLESS STEEL HEAT RESISTANT
CHIMNEY LINERS SYSTEM

KPKKKZDSLIMKSNKAD
KZD-SLIMKAKDKNSWR
KZSKPDKDKSNKADKZ
DSLIMKZDKBKOKPKZD
KPD SWRDKZSKKDKZD
KZDKTKDSLIMKDSWR
KKDKPKPKZDKAKKD
SWRDKAKPMSLIMKPD
NKADKPKKDKPKTKS
SLIMKKKZDKBKZDKKD
KTKPKKDSWRKTDKN
KKS WRDKZDKPKBKZS



KZD-SLIM

Characteristics of KZD-SLIM system

KZD-SLIM system - insulated pipes and fittings of exhaust system for open chamber heating appliance for solid fuels. KZD-SLIM system is produced from stainless steel of proper chemical composition that guarantees its heat-resistance. Combustion of solid fuels is characterized by high temperatures that cause heating of chimney duct walls. Steel composition as well as its technological parameters have to guarantee the proper work of chimney and protect it from the damaging heat. Insulation made of stone wool with standard thickness of 30 mm is also heat resistant (possibility of continuous work in temperature of 700 °C). KZD -SLIM system is produced of following wall thickness- 0,5 mm, 0,8 mm and 1 mm.

The main features of the KZD-SLIM system



The best quality



Insulated 30 mm



Possibility of installation outside the building



Easy installation

When KZD-SLIM system is to be used and what are its advantages

KZD-SLIM system is insulated chimney liners system. Regular thickness, that can be found averages 30 mm. The very first argument, that suggest choice of KZD-SLIM system is open chamber heating appliance for solid fuels. They are characterized by uptake of surrounding air which is necessary for combustion process. Exhaust gases are carried away by chimney duct. The necessity of chimney that is built outside the house constitutes another relevant aspect. As we already know, chimneys that are built outside must have an insulation, which protects its walls from over-cooling. External chimney is especially exposed to every temperature changes. As a result of chimney walls overcooling, it comes to fuel cooling and chimney draught disturbance. An insulation is to protect from such an effect.

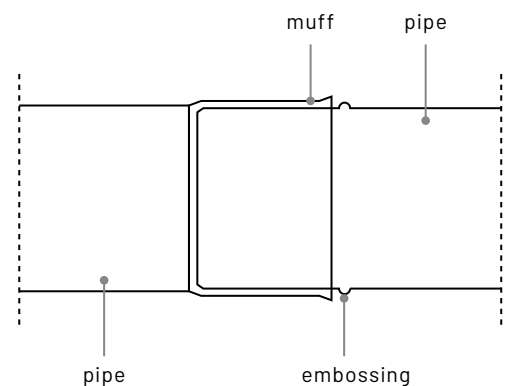
The basic advantage for KZD-SLIM system users is its safety, that is provided by tight pin-muff coupling. Currently it is considered as the most important argument among our customers. Possibility of chimney building without having a chimney shaft is another advantage. Application of insulation (mineral wool) with appropriate technological parameters, U value under 0,038 W/m*K and temperature durability: 700°C ensures appropriate thermal insulation. Construction of chimney shaft generates additional costs and very often unnecessary modifications in building structure. KZD-SLIM system allows to avoid unnecessary work as it does not require chimney shaft. It is an independent construction, properly supported and fixed to a building's wall with clamps.

Technical data

Destination	Open chamber heating appliances
Fuel type	Ecological solid fuels
Available diameters	Dn 120-Dn 200, larger diameters upon individual request
Core steel thickness	0,5 - 1,0 mm
Thickness of jacket steel	0,5 mm
Type of jacket steel	1.4301 or other according to PN-EN 1856-1
Type of connection	Socket
Temperature class	T 450
Pressure class	N1 (pressure of 40Pa)
Operation mode	Negative pressure
Soot fire resistant	G 1000
Corrosion resistance	Vm
Insulation	Mineral wool, thickness 30 mm, density 80 kg/m ³ , other upon individual request.

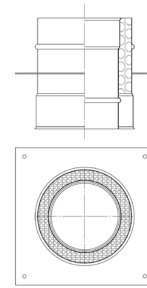
Connection of KZD-SLIM system components

KS system components are connected by socket system. Thanks to such connection the structure of the liner is stiff and connections are tight



Pass-through chimney base

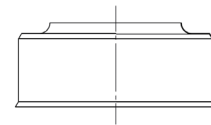
Index	KZDD-PKPP
-------	-----------



Diameters [mm]	120	130	140	150	160	180	200
Available steel thickness [mm]	0,5 0,8	0,5 0,8	0,5 0,8	0,5 0,8	0,5 0,8	0,5 0,8	0,5 0,8
thickness	1,0	1,0	1,0	1,0	1,0	1,0	1,0

Top completion of insulation

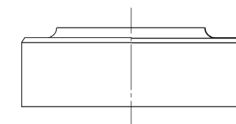
Index	KZD - ZIG-SLIM
-------	----------------



Diameters [mm]	120	130	140	150	160	180	200
Available steel thickness [mm]	0,5	0,5	0,5	0,5	0,5	0,5	0,5
thickness							

Bottom completion of insulation

Index	KZD - ZID-SLIM
-------	----------------

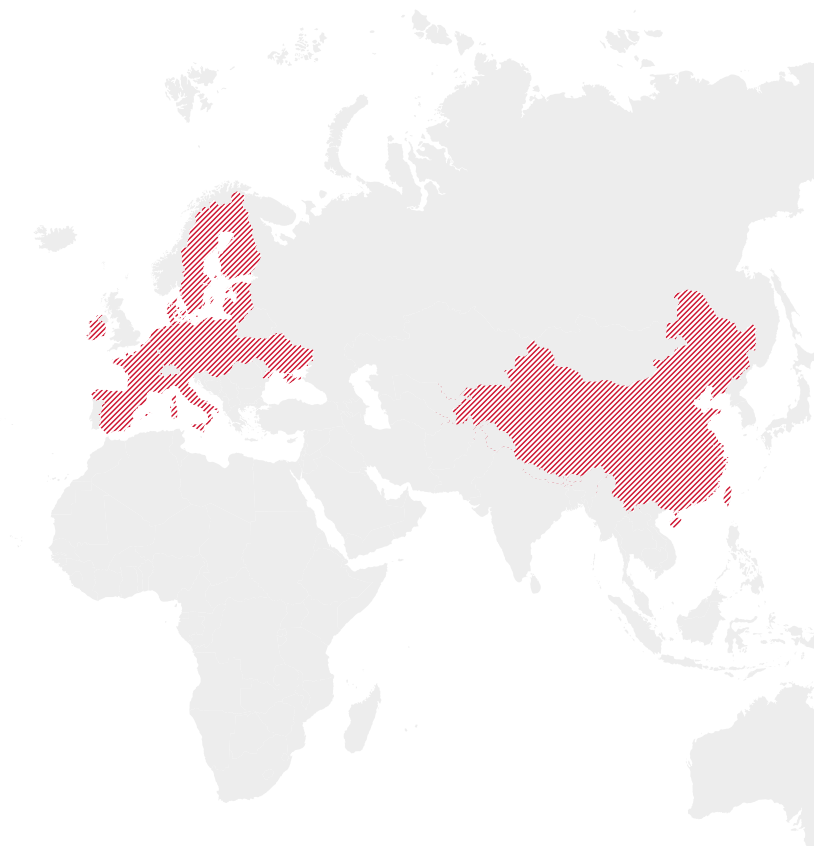


Diameters [mm]	120	130	140	150	160	180	200
Available steel thickness [mm]	0,5	0,5	0,5	0,5	0,5	0,5	0,5
thickness							

We are open to the whole world!

The great capacity of our production facilities and the experience we have gained over many years allows us to develop our company through international cooperation. As a result, we are looking beyond the borders of Poland.

To this date, the steel components we produce have been supplied to European countries such as Austria, Germany, France, Italy, Sweden, Finland, Denmark, the Netherlands, the Czech Republic, Slovakia, and Lithuania, among others.



Count on an experienced company! Get in touch with us!

Kominus Polska Sp. z o.o. (Ltd.)

Address:
Lezkowice 112
32-015 Klaj
Poland
VAT PL683 20 71 083

Export Department
export@kominus.com.pl

C: +48 694 458 674
C: +48 664 789 675

Technical and Product
Development Department
techniczny@kominus.com.pl



We Are Made of Steel



**Kominus Polska Headquarters
and main production facility**

www.kominus.com.pl

 / kominuscompl

 / kominus-polska

 / kominus_polska