



CHIMNEY POTS AND EXTENSIONS SYSTEM

KS KKKZ S SLIMK P M K P D  
K Z D **KN** S W R D K D K N S W R  
D K P K P D K D K T N K A D K Z  
D S L I M K Z D K B K O K P K Z D  
K P D S W R K N K A K K D K Z D  
K Z D K T K D S L I M K D S W R  
K K D K P M K P K Z D K A K K D  
S W R D K A K P M S L I M K P D  
N K A D K P M K K D K P K T K S  
S L I M K K K Z D K B K Z D K K D  
K T K P M K K D S W R K T D K N  
K K S W R D K Z D K P K B K Z S

# KN

## Characteristics of KN system

KN system is a system of chimney extensions and rotational chimney pots made of stainless steel. We distinguish chimney pots applied in a flue- **Rotomax Inside** and applied in ventilation systems- **Turbomax, Powerwind** and universal pots for both systems - **Turbowind**.

### What is guaranteed by KN System?



The best quality.  
Made of stainless steel



Wide variety of available dimensions



Design and manufacturing accuracy



Possibility of personalization

### Why pots?

The basic function of three types of chimney pots is to ensure the proper chimney draught. This is the most important aspect that is responsible for proper chimney work. Rotomax cowls are used in flues in exhaust systems for appliances burning gas and fuel oil.

Thanks to the proper shape and use of modern bearings they set up in front of blowing wind and protect the chimney duct. Blowing wind can lead to chimney draught whirling and in effect to reverse draught. In ventilation ducts cowls have to increase the chimney draught what ensures the proper air circulation inside the building. Turmomax, which is "rotation ball", thanks to its proper shape perfectly uses the power of the wind by rotation. It causes force with the turn opposite to the wind direction and protects the chimney.



### Rotomax Inside®

The meaning of the word INSIDE is the perfect quintessence of technical solutions used in these types of cowls. The solution lies in the fact that the bearing's entire structure has been built-up "inside" the base of the cowl. A build-up bearing with a carbon inset has an additional protection from atmospheric agents and affects the aesthetic appearance of the cowl. Additionally bearing's construction is protected against setting of particles from exhaust fumes. Setting particles can influence cowl's work and can lead to the 'creaking' effect, which is very burdensome for the residents INSIDE® version completely eliminates the 'creaking' effect. Moreover the construction allows to clean the chimney without taking the topmost part of the cowl off the chimney. Aesthetics, precision, practicality – these are the words, which reflect to the fullest the benefits of the new Rotomax cowls.



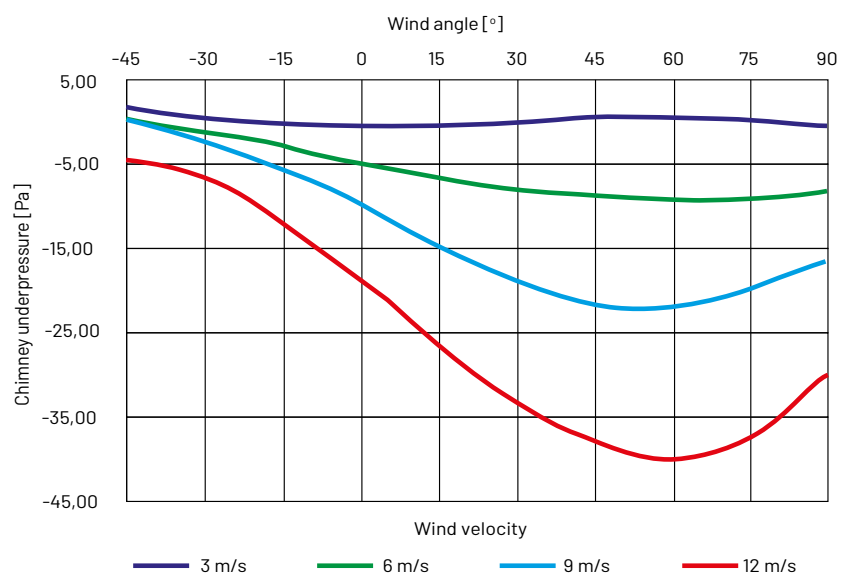
### Turbomax

Turbomax rotary cowls are designed for ventilation ducts. They use the force of wind to generate chimney draught in gravitational ventilation systems. In addition, they protect the duct against rain and snow.



### Turbowind

Turbowind is the latest development in the Kominus KN system. Its main advantage is that it contains no rotating elements, which contributes to its long service life and trouble-free operation. The cowl uses the force of the wind to create negative pressure at the end of the duct. This creates draught and simultaneously protects the duct against wind force. The component is designed for flue, smoke and ventilation ducts.



### Rectangular chimney extension H=1000 mm

Index KN-PKP10



Dimensions (AxB)	[mm]	140x140	140x200	140x250	140x270	200x200	270x270
Available steel thickness	[mm]	0,5	0,5	0,5	0,5	0,5	0,5
		0,8	0,8	0,8	0,8	0,8	0,8
		1,0	1,0	1,0	1,0	1,0	1,0

### Rectangular chimney extension H=750 mm

Index KN-PKP07



Dimensions (AxB)	[mm]	140x140	140x200	140x250	140x270	200x200	270x270
Available steel thickness	[mm]	0,5	0,5	0,5	0,5	0,5	0,5
		0,8	0,8	0,8	0,8	0,8	0,8
		1,0	1,0	1,0	1,0	1,0	1,0

### Rectangular chimney extension H=500 mm

Index KN-PKP05



Dimensions (AxB)	[mm]	140x140	140x200	140x250	140x270	200x200	270x270
Available steel thickness	[mm]	0,5	0,5	0,5	0,5	0,5	0,5
		0,8	0,8	0,8	0,8	0,8	0,8
		1,0	1,0	1,0	1,0	1,0	1,0

### Rectangular chimney extension with plate H=1000 mm

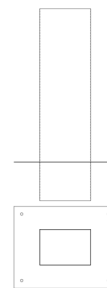
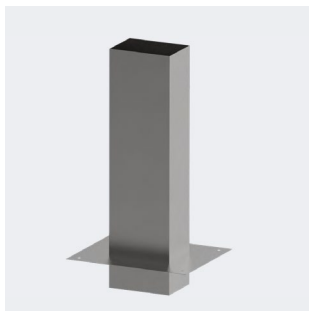
Index KN-PKP10P



Dimensions (AxB)	[mm]	140x140	140x200	140x250	140x270	200x200	270x270
Available steel thickness	[mm]	0,5	0,5	0,5	0,5	0,5	0,5
		0,8	0,8	0,8	0,8	0,8	0,8
		1,0	1,0	1,0	1,0	1,0	1,0

### Rectangular chimney extension with plate H=750 mm

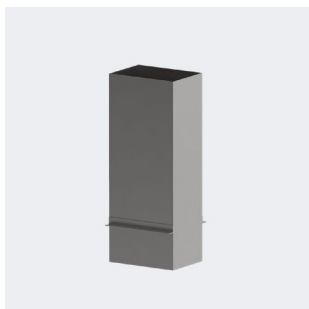
Index KN-PKP07P



Dimensions (AxB)	[mm]	140x140	140x200	140x250	140x270	200x200	270x270
Available steel thickness	[mm]	0,5 0,8 1,0	0,5 0,8 1,0	0,5 0,8 1,0	0,5 0,8 1,0	0,5 0,8 1,0	0,5 0,8 1,0

### Rectangular chimney extension with plate H=500 mm

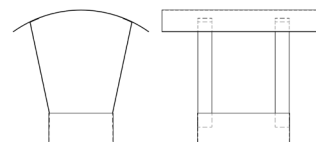
Index KN-PKP05P



Dimensions (AxB)	[mm]	140x140	140x200	140x250	140x270	200x200	270x270
Available steel thickness	[mm]	0,5 0,8 1,0	0,5 0,8 1,0	0,5 0,8 1,0	0,5 0,8 1,0	0,5 0,8 1,0	0,5 0,8 1,0

### Rectangular cap

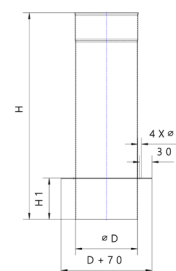
Index KN-D4



Dimensions (AxB)	[mm]	140x140	140x200	140x250	140x270	200x200	270x270
Available steel thickness	[mm]	0,5 0,8 1,0	0,5 0,8 1,0	0,5 0,8 1,0	0,5 0,8 1,0	0,5 0,8 1,0	0,5 0,8 1,0

### Round chimney extension H=1000 mm

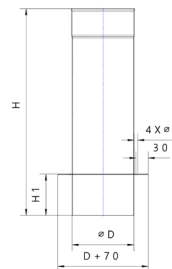
Index KN-PK010



Diameters	[mm]	130	150	160	180	200
Available steel thickness	[mm]	0,5 0,8 1,0	0,5 0,8 1,0	0,5 0,8 1,0	0,5 0,8 1,0	0,5 0,8 1,0

### Round chimney extension H=500 mm

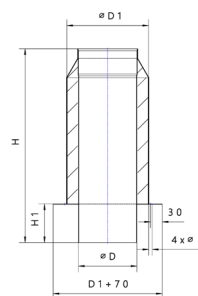
Index KN-PK005



Diameters	[mm]	130	150	160	180	200
Available steel thickness	[mm]	0,5	0,5	0,5	0,5	0,5
		0,8	0,8	0,8	0,8	0,8
		1,0	1,0	1,0	1,0	1,0

### Insulated round chimney extension H=1000 mm

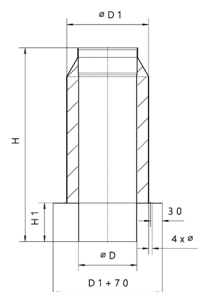
Index KN-PKI010



Diameters	[mm]	130/90	150/210	160/220	180/240	200/260
Available steel thickness	[mm]	0,5	0,5	0,5	0,5	0,5
		0,8	0,8	0,8	0,8	0,8
		1,0	1,0	1,0	1,0	1,0

### Insulated round chimney extension H=500 mm

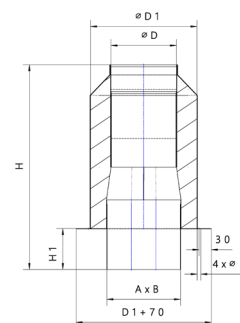
Index KN-PKI005



Diameters	[mm]	130/90	150/210	160/220	180/240	200/260
Available steel thickness	[mm]	0,5	0,5	0,5	0,5	0,5
		0,8	0,8	0,8	0,8	0,8
		1,0	1,0	1,0	1,0	1,0

### Insulated oval chimney extension H=1000 mm

Index KN-PKIOW10



Dimensions	[mm]	120/180	110x210	120x210	110x230	120x225	120x240
Diameters	[mm]	130/90	150/210	160/220	180/280	180/240	200/260
Available steel thickness	[mm]	0,5	0,5	0,5	0,5	0,5	0,5
		0,8	0,8	0,8	0,8	0,8	0,8
		1,0	1,0	1,0	1,0	1,0	1,0









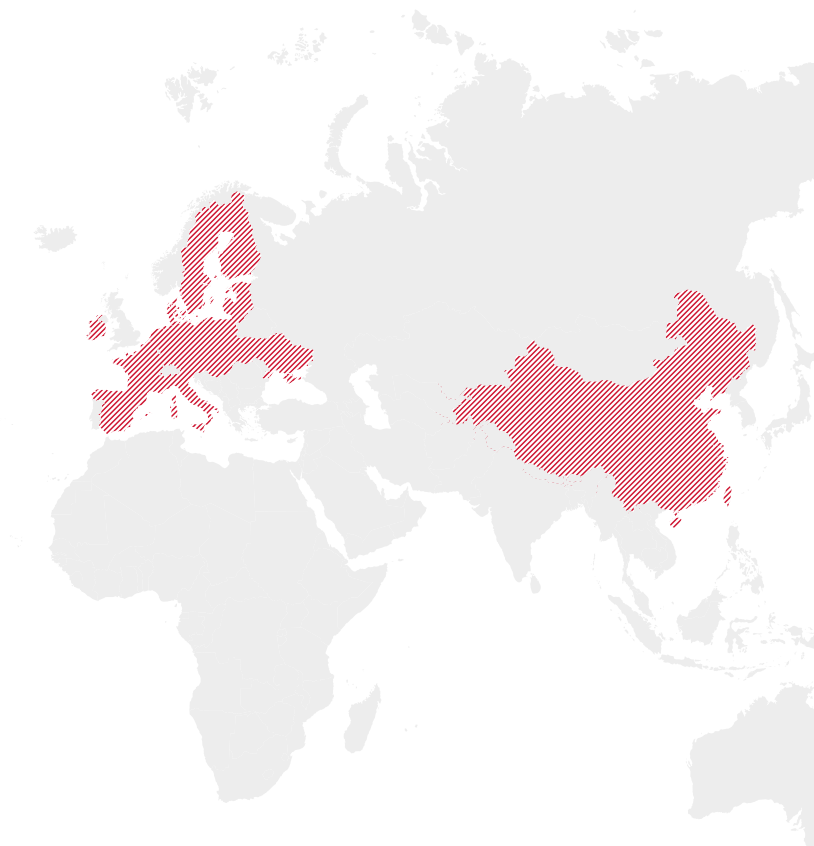




# We are open to the whole world!

The great capacity of our production facilities and the experience we have gained over many years allows us to develop our company through international cooperation. As a result, we are looking beyond the borders of Poland.

To this date, the steel components we produce have been supplied to European countries such as Austria, Germany, France, Italy, Sweden, Finland, Denmark, the Netherlands, the Czech Republic, Slovakia, and Lithuania, among others.



## Count on an experienced company! Get in touch with us!

**Kominus Polska Sp. z o.o. (Ltd.)**

Address:  
Lezkowice 112  
32-015 Klaj  
Poland  
VAT PL683 20 71 083

Export Department  
export@kominus.com.pl

C: +48 694 458 674  
C: +48 664 789 675

Technical and Product  
Development Department  
techniczny@kominus.com.pl



**We Are Made of Steel**




**Kominus Polska Headquarters  
and main production facility**

[www.kominus.com.pl](http://www.kominus.com.pl)

 / kominuscompl

 / kominus-polska

 / kominus\_polska