



INSULATED STAINLESS STEEL CHIMNEY LINERS SYSTEM

KPKKKZDSLIMKSNKAD
KZDKASWRD **KD** KNSWR
KZSKPDKDKSNKADKZ
DSLIMKZDKBKOKPKZD
KPD SWRDKZSKKDKZD
KZDKTKDSLIMKDSWR
KKDKPKPKZDKAKKD
SWRDKAKPMSLIMKPD
NKADKPKKDKPKTKS
SLIMKKKZDKBKZDKKD
KTKPKKDSWRKTDKN
KKS WRDKZDKPKBKZS

KD

Characteristics of KD system

KD Chimney system- Insulated pipes and fittings exhaust system for open chamber heating appliances burning gas and oil. KD system is produced from stainless steel of proper chemical composition, that guarantees its acid-resistance. During gas or fuel oil combustion acidic oxides are released. Acid produced during such a reaction is very dangerous for steel. That's why it is so important that steel should be resistant for the action of such chemical compositions. KD system produces liners of following thickness- 0,5 mm 0,8 mm and 1 mm.

The main features of the KD system



The best quality



Insulated 30 mm



Possibility of installation outside the building

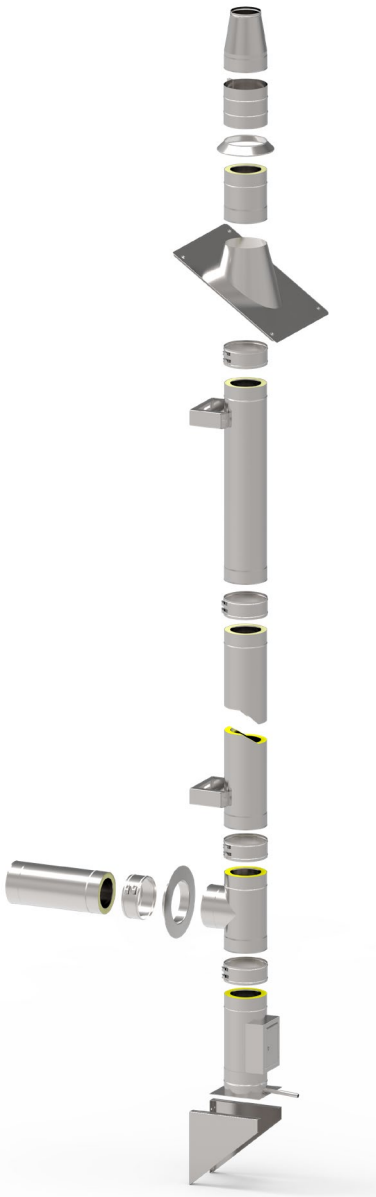


Easy installation

When KD system is to be used and what are its advantages

KD system is insulated chimney liners system. Regular thickness, that can be found at price lists, averages 30 mm. Upon individual request we are able to manufacture product of 50 mm thickness. The very first argument, that suggest choice of KD system is open chamber heating appliance. They are characterized by uptake of surrounding air which is necessary for combustion process. Exhaust gases are carried away by chimney duct. The necessity of chimney that is built outside the house constitutes another relevant aspect. As we already know, chimneys that are built outside must have an insulation, which protects its walls from over chilling. External chimney is especially exposed to every temperature changes. As a result of chimney walls over chilling, it comes to fuel cooling and chimney draught disturbance. An insulation is to protect from such an effect.

The basic advantage for KD system users is safety, that is provided by tight pin-muff coupling. Possibility of chimney building without having a chimney shaft is another advantage. Application of insulation (mineral wool) with appropriate technological parameters, U value 0,040 W/m*K and temperature durability: 300°C ensures appropriate thermal insulation. Construction of chimney shaft generates additional costs and very often unnecessary modifications in building structure. KD system allows to avoid all unnecessary work as it does not require chimney shaft. It is an independent construction, properly supported and fixed to a building's wall with a clamp. of installation. And of course the comfortable using, ensured thanks to all material and technological features of the system. Proper technological process in connection with modern production process guarantees long lasting system functionality.

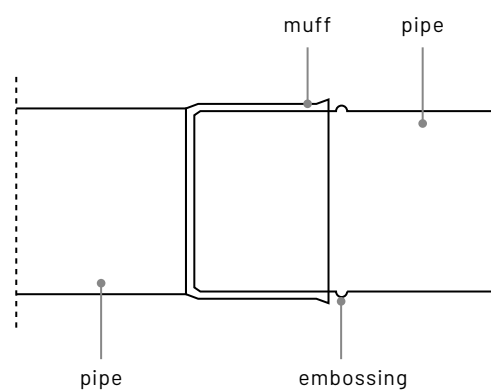


Technical data

Destination	Open chamber heating appliances
Fuel type	Gas/ fuel oil
Available diameters	Dn 110-Dn 500, larger diameters upon individual request
Core steel thickness	0,5 - 1,0 mm
Thickness of jacket steel	0,5 mm
Type of jacket steel	1.4301, 1.4404, 1.4571 or other according to PN-EN 1856-1
Type of connection	Socket
Temperature class	T 450
Pressure class	N1 (pressure of 40Pa)
Operation mode	Negative pressure
Condensate resistance	W
Soot fire resistant	G 1000
Corrosion resistance	Vm
Insulation	Mineral wool, thickness 30mm, density 100 kg/m ³ , other upon individual request.

Connection of KD system components

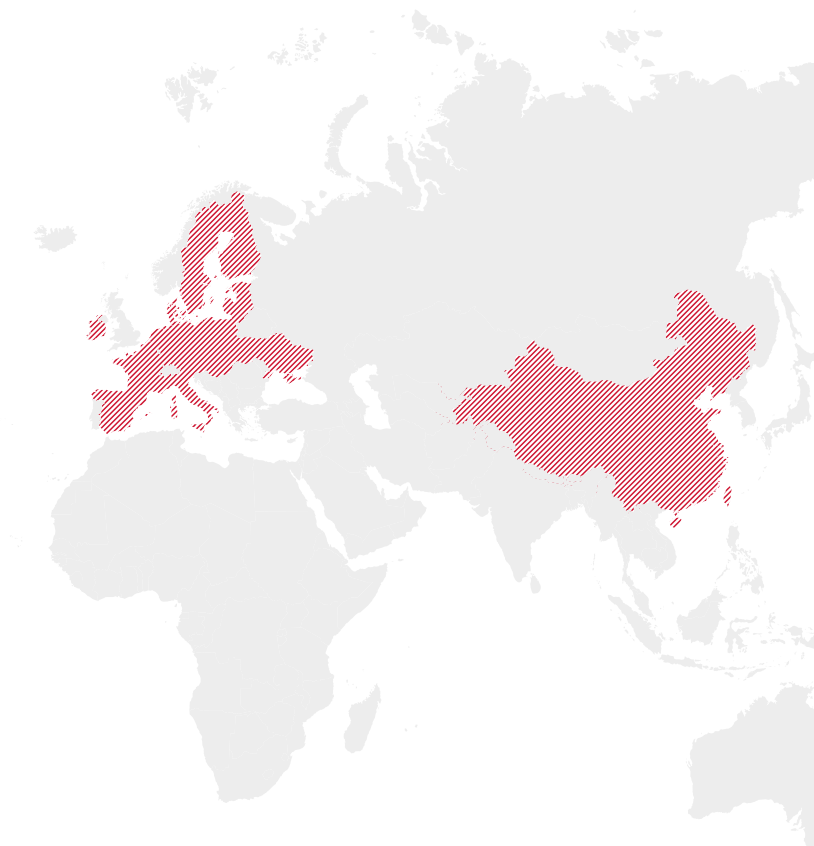
KD system components are connected by socket system. Thanks to such connection the structure of the liner is stiff and connections are tight



We are open to the whole world!

The great capacity of our production facilities and the experience we have gained over many years allows us to develop our company through international cooperation. As a result, we are looking beyond the borders of Poland.

To this date, the steel components we produce have been supplied to European countries such as Austria, Germany, France, Italy, Sweden, Finland, Denmark, the Netherlands, the Czech Republic, Slovakia, and Lithuania, among others.



Count on an experienced company! Get in touch with us!

Kominus Polska Sp. z o.o. (Ltd.)

Address:
Lezkowice 112
32-015 Klaj
Poland
VAT PL683 20 71 083

Export Department
export@kominus.com.pl

C: +48 694 458 674
C: +48 664 789 675

Technical and Product
Development Department
techniczny@kominus.com.pl



We Are Made of Steel



**Kominus Polska Headquarters
and main production facility**

www.kominus.com.pl

 / kominuscompl

 / kominus-polska

 / kominus_polska