



MODERN CHIMNEY ACCESSORIES

KS KKKZ S SLIMK P M K P D
K Z D **KA** S W R D K D K N S W R
D K P K P D K D K T N K A D K Z
D S L I M K Z D K B K O K P K Z D
K P D S W R K N K A K K D K Z D
K Z D K T K D S L I M K D S W R
K K D K P M K P K Z D K A K K D
S W R D K A K P M S L I M K P D
N K A D K P M K K D K P K T K S
S L I M K K K Z D K B K Z D K K D
K T K P M K K D S W R K T D K N
K K S W R D K Z D K P K B K Z S

KA

Characteristics of KA system

KA system is a chimney accessories system. The system consists of all accessories for basic chimney construction as well as fine parts like: fixing clamps, centring clamps, montage clamps etc. KA system provides also cleanout door and supporting constructions.

What is guaranteed by KA System?



The best quality



Wide variety of available dimensions



Design and manufacturing accuracy



Possibility of personalization

Advices for customers

Development of KA system provides in large measure many possibilities according to choice of appropriate dimensions of particular elements for installed chimney.

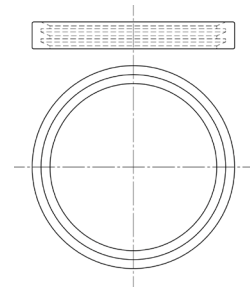
First element is chimney pass-through, that enables possibility of element match to the proper angle of roof slope. They are manufactured from stainless steel as well as with a lead apron flashing.

Another element consists of adjustable fixing clamps, centring clamps, montage clamps and support structures, that are necessary during chimney installation.

KA system includes also cleanout door. Cleanout door are made according to the following dimensions: 140 mm x 140 mm and 140 mm x 210 mm.

Acid-proof gasket

Index KA-U

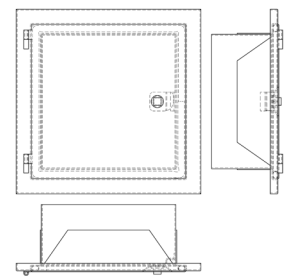


Diameters [mm] 60-110 120-140 150-160 180-200 210-220 225 240 250 260 270-290 300 310 330-360 380-410

Cleanout doors

Cleanout door 140x140

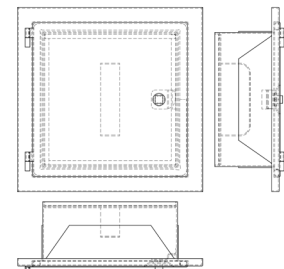
Index KA-DWL-14x14



Dimensions [mm] 140x140
Available steel thickness [mm] 0.5

Cleanout door with partition 140x140

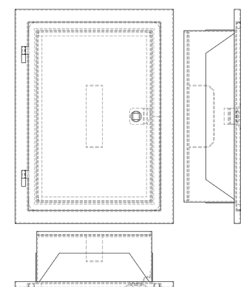
Index KA-DWLP-14x14



Dimensions [mm] 140x140
Available steel thickness [mm] 0.5

Cleanout door with partition 140x210

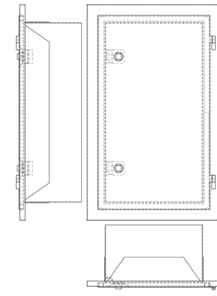
Index KA-DWLP-14x21



Dimensions [mm] 140x210
Available steel thickness [mm] 0.5

Cleanout door 130x260 (1)

Index KA-DWL-13x26(W1)

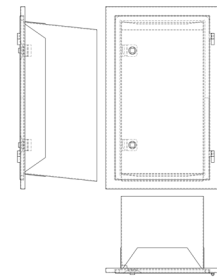


Dimensions [mm] 130x260

Available steel thickness [mm] 0,5

Cleanout door 130x260 (2)

Index KA-DWL-13x26(W2)

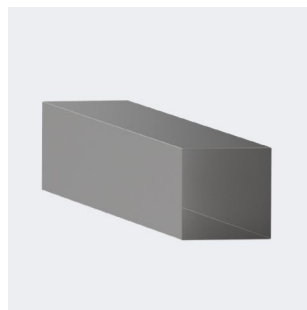


Dimensions [mm] 130x260

Available steel thickness [mm] 0,5

Cleanout door extension 140x140 mm L=1000 mm

Index KA-PW-DWL-14x14



Dimensions [mm] 140x140

140x140

140x140

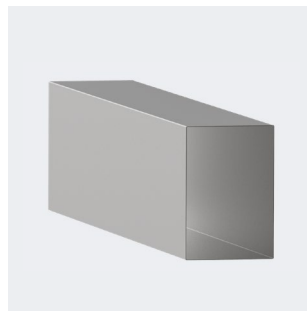
Available steel thickness [mm] 0,5

0,8

1,0

Cleanout door extension 140x210 mm L=1000 mm

Index KA-PW-DWL-14x21



Dimensions [mm] 140x210

140x210

140x210

Available steel thickness [mm] 0,5

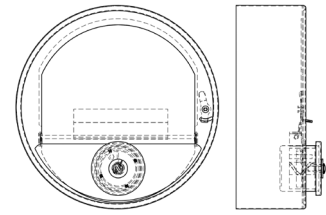
0,8

1,0

Chimney draft limiters

Round draft limiter W1

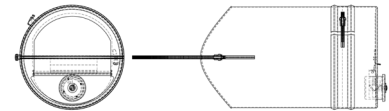
Index KA-RCK10(W1)



Dimensions [mm] 150

Draft limiter for pipe W2

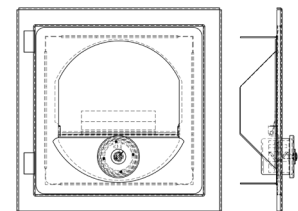
Index KA-RCK10(W2)



Dimensions [mm] 120 - 200

Draft limiter with the square frame W3

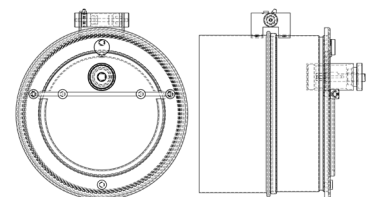
Index KA-RCK10(W3)



Dimensions [mm] 140x140

Draft limiter with with explosion flap W4

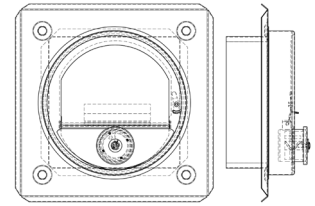
Index KA-RCK10(W4)



Dimensions [mm] 250

Draft limiter with the frame W5

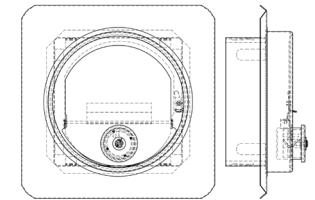
Index KA-RCK10(W5)



Dimensions [mm] 140x140

Draft limiter with the frame for cleanout W6

Index KA-RCK10(W6)

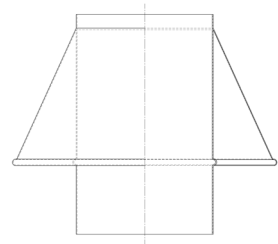


Dimensions [mm] 140x140

Connical covers

Connical cover for ceramics (1)

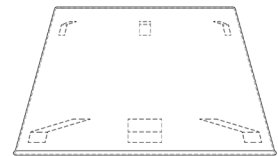
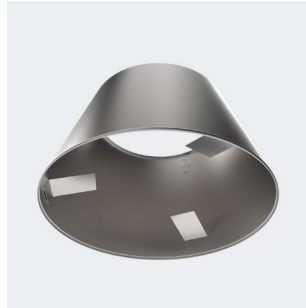
Index KA-SOC1



Diameters	[mm]	120	130	140	150	160	180	200
-----------	------	-----	-----	-----	-----	-----	-----	-----

Connical cover for ceramics (2)

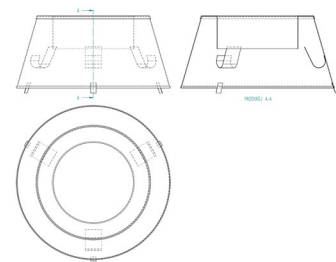
Index KA-SOC2



Diameters	[mm]	120	130	140	150	160	180	200
-----------	------	-----	-----	-----	-----	-----	-----	-----

Connical cover for ceramics (3)

Index KA-SOC3

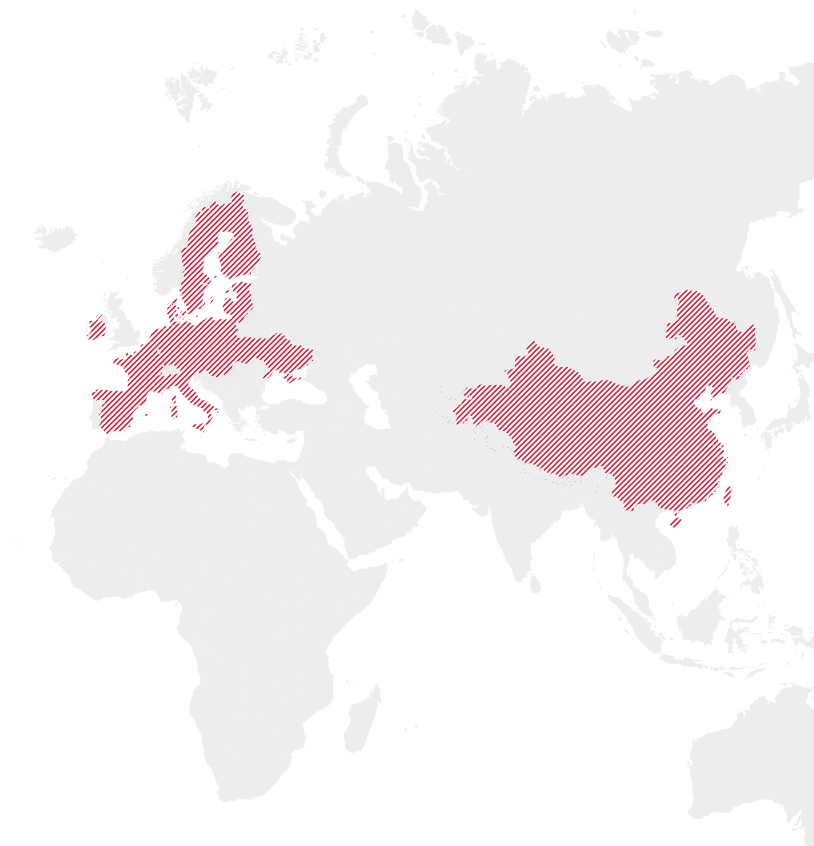


Diameters	[mm]	120	130	140	150	160	180	200
-----------	------	-----	-----	-----	-----	-----	-----	-----

We are open to the whole world!

The great capacity of our production facilities and the experience we have gained over many years allows us to develop our company through international cooperation. As a result, we are looking beyond the borders of Poland.

To this date, the steel components we produce have been supplied to European countries such as Austria, Germany, France, Italy, Sweden, Finland, Denmark, the Netherlands, the Czech Republic, Slovakia, and Lithuania, among others.



Count on an experienced company! Get in touch with us!

Kominus Polska Sp. z o.o. (Ltd.)

Address:
Lezkowice 112
32-015 Klaj
Poland
VAT PL683 20 71 083

Export Department
export@kominus.com.pl

C: +48 694 458 674
C: +48 664 789 675

Technical and Product
Development Department
techniczny@kominus.com.pl



We Are Made of Steel



**Kominus Polska Headquarters
and main production facility**

www.kominus.com.pl

 / kominuscompl

 / kominus-polska

 / kominus_polska